

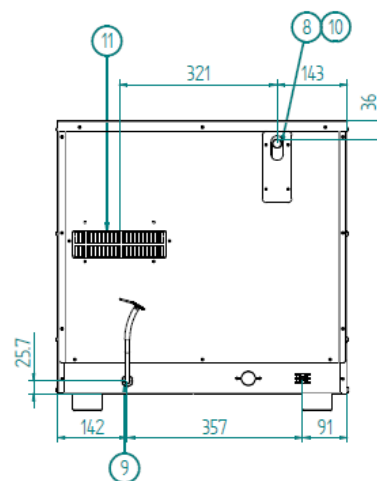
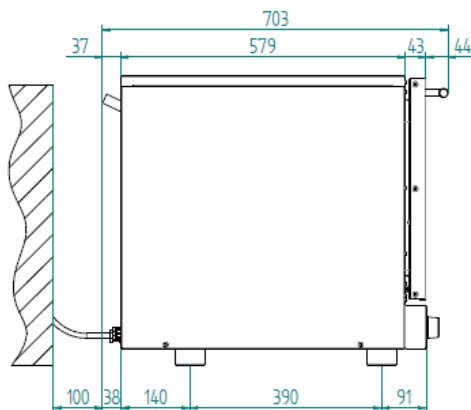
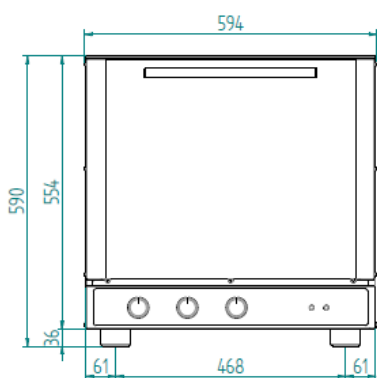


**PROFESSIONAL  
THINKING**

# PRODUCT SHEET EKF 423 M

TECNOEKA SRL - VIA MARCO POLO, 11 - 35010 BORGORICCO - PADOVA - ITALY - TEL. +39 049 5791479 +39 049 9300344 - FAX +39 049 5794387 - E-MAIL: INFO@TECNOEKA.COM - WWW.TECNOEKA.COM - WWW.TECNOEKA.RU

## EKF 423 M - ELECTRIC CONVECTION OVEN WITH MULTIFUNCTION 4 TRAYS/GRIDS 2/3 GN 435x340mm



**LEGEND**

- |                         |  |
|-------------------------|--|
| 1. USB PORT             | 8. STEAM OUTLET                        |
| 2. SERIAL PORT          | 9. ELECTRIC CABLE FIXER                |
| 3. PLUG FOR CORE PROBE  | 10. CAUTION! HOT SURFACE               |
| 4. WATER OUTLET TUBE    | 11. DON'T CLOG UP VENTILATION OPENINGS |
| 5. WASHING WATER INLET  | 12. WATER INLET MAX. 200 kPa           |
| 6. SOFTENED WATER INLET | 13. SOFTENED WATER INLET MAX. 200 kPa  |
| 7. WATER INLET          | 14. BOILER CLEANING INLET              |
|                         | 15. DON'T OPEN THE CAP WHILE WORKING   |





**PROFESSIONAL  
THINKING**

# PRODUCT SHEET EKF 423 M

TECNOEKA SRL - VIA MARCO POLO, 11 - 35010 BORGORICCO - PADOVA - ITALY - TEL. +39 049 5791479 +39 049 9300344 - FAX +39 049 5794387 - E-MAIL: INFO@TECNOEKA.COM - WWW.TECNOEKA.COM - WWW.TECNOEKA.RU

| DIMENSIONAL FEATURES                               |  |          |          | FUNCTIONAL FEATURES                      |                                     |                 |                                   |                |
|--|--|----------|----------|--|-------------------------------------|-----------------|-----------------------------------|----------------|
| <b>DIMENSIONS</b>                                  | <b>L</b>                                       | <b>P</b> | <b>H</b> | POWER                                    | ELECTRICITY                         |                 |                                   |                |
| OVEN DIMENSIONS (mm)                               | 590  | 695      | 590      | CAPACITY                                 | N° 4 TRAYS/GRIDS                    |                 |                                   |                |
| CARDBOARD BOX DIMENSIONS (mm)                      | 680  | 760      | 600      | TYPE OF COOKING                          | MULTIFUNCTION                       |                 |                                   |                |
| OVEN DIMENSIONS (inches)                           | 23,22  | 27,36    | 23,22    | HUMIDIFICATION                           | /                                   |                 |                                   |                |
| CARDBOARD BOX DIMENSIONS (inches)                  | 26,77  | 29,92    | 23,62    | COOKING CHAMBER                          | AISI 430 STAINLESS STEEL            |                 |                                   |                |
| OVEN WEIGHT (kg)                                   | 36,4   |          |          | WATER OUTLET                             | /                                   |                 |                                   |                |
| PACKED OVEN WEIGHT (kg)                            | 41,4   |          |          | STEAM OUTLET                             | DIRECT                              |                 |                                   |                |
| OVEN WEIGHT (lbs)                                  | 80,24  |          |          | TEMPERATURE                              | 50 ÷ 300°C                          |                 |                                   |                |
| PACKED OVEN WEIGHT (lbs)                           | 91,27  |          |          | TEMPERATURE CONTROL                      | THERMOSTAT                          |                 |                                   |                |
| DISTANCE BETWEEN RACK RAILS (mm)                   | 74   |          |          | CONTROL PANEL                            | ELECTROMECHANIC – LOWER SIDE        |                 |                                   |                |
| FAN DIMENSION (mm)                                 | Ø 150 - Nr. 6 BLADES                           |          |          | N° OF PROGRAMS                           | /                                   |                 |                                   |                |
| CENTER-TO-CENTER DISTANCE BETWEEN RUBBER FEET (mm) | 468  |          |          | PROGRAMMABLE COOKING STEPS               | /                                   |                 |                                   |                |
| <b>ELECTRONIC FEATURES</b>                         |  |          |          | PRE-HEATING TEMPERATURE                  | /                                   |                 |                                   |                |
|  |  |          |          | PRE-HEATING FUNCTION                     | /                                   |                 |                                   |                |
| POWER SUPPLY (kW)                                  | 2,6  |          |          | DOOR                                     | TILT DOOR                           |                 |                                   |                |
| FREQUENCY (Hz)                                     | 50/60  |          |          |  | VENTILATED                          |                 |                                   |                |
| VOLTAGE (Volt)                                     | AC 220/230                                     |          |          |  | INSPECTIONABLE GLASS                |                 |                                   |                |
| N° OF MOTORS                                       | 1 UNIDIRECTIONAL                               |          |          | MODULARITY                               | YES                                 |                 |                                   |                |
| RPM  | 2250   |          |          | RUBBER FEET                              | NOT ADJUSTABLE                      |                 |                                   |                |
| N° OF RESISTORS                                    |  |          |          | <b>EQUIPMENT</b>                         |                                     |                 |                                   |                |
|  |  |          |          | CIRC.                                    | 1pz                                 | 2,7kW           | LATERAL SUPPORTS                  | 1right = 1left |
|  |  |          |          | TOP+GRILL                                | 1                                   | 0,9 kW + 1,9 kW | ALUMINUM TRAYS 429X345            | 4 pieces       |
| SOLE   |  |          |          | 1  | 1,4 kW                              | CABLE           | SINGLE-PHASE [3G 1,5] - L=1600 MM |                |
| BOILER   | /  |          |          | <b>OPTIONAL</b>                          |                                     |                 |                                   |                |
| LIMIT CONTROL (Sicurezza positiva)                 | BIPOLAR WITH MANUAL RESET                      |          |          | AISI 430 ADAPTER KIT 2/3 GN              | COD.20900200                        |                 |                                   |                |
| PROTECTION AGAINST WATER                           | IPX3   |          |          | HORIZONTAL CHROMED GRID 435X340          | COD.KG7                             |                 |                                   |                |
| LIGHTING   | Nr.1 INCANDESCENT LIGHT BULB (COOKING CHAMBER) |          |          | AISI 304 HORIZONTAL CHROMED GRID 435X340 | COD.KG7X                            |                 |                                   |                |
|  |  |          |          | TABLE                                    | COD. EKT 423 – EKTR 423             |                 |                                   |                |
|  |  |          |          | PROOFER                                  | COD. EKL 823                        |                 |                                   |                |
|  |  |          |          | OPTIONAL PACKAGING                       | CAGE, EUROPALLET (800x1200x1118 mm) |                 |                                   |                |

